

Glen Abbey Residential Development

340 N Pine Meadow Dr. DeBary, FL 32713

 **Palkiper**
Commercial Real Estate Services

Reduced!

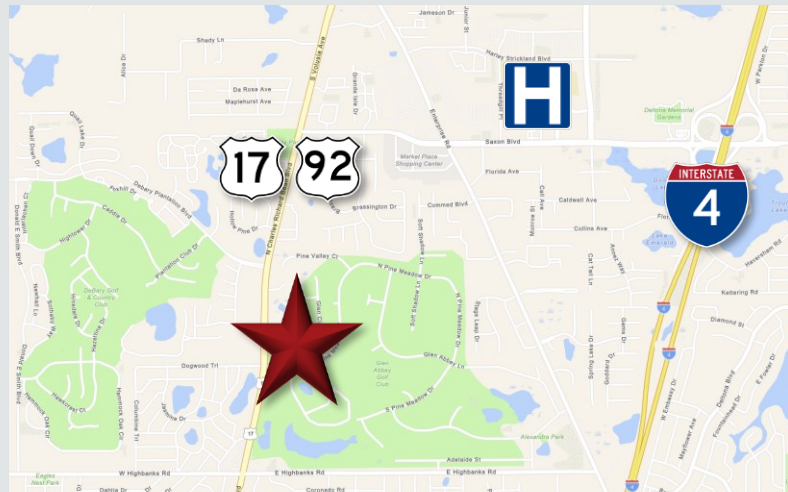


LOCATION DETAILS

Adjacent to the Glen Abbey Club gated community and Walmart on Pine Meadow Dr, just east of US Hwy 17-92. Only a 5-minute drive to AdventHealth Fish Memorial Hospital, Target, Publix Super Market, Planet Fitness, and multiple restaurants along Saxon Blvd and Enterprise Rd. Less than 3 miles from I-4. Nearby developments include Integra 289 Exchange and Rivington, a 296-acre master-planned community currently under construction.

PROPERTY DETAILS

- \pm 5.25 Acres
- \pm 400' frontage
- Zoned Residential PUD
- **Proposed Development:** 15 single family homes or 20 townhomes



2021 DEMOGRAPHICS

	1-MILE	3-MILE	5-MILE
Population	8,343	40,649	89,688
Average HH Income	\$83,428	\$70,776	\$69,517
Median HH Income	\$69,692	\$56,038	\$55,926

CONTACT FOR MORE INFORMATION

Marie Shorey, CCIM

(407) 383-8142

marie@palkiper.com

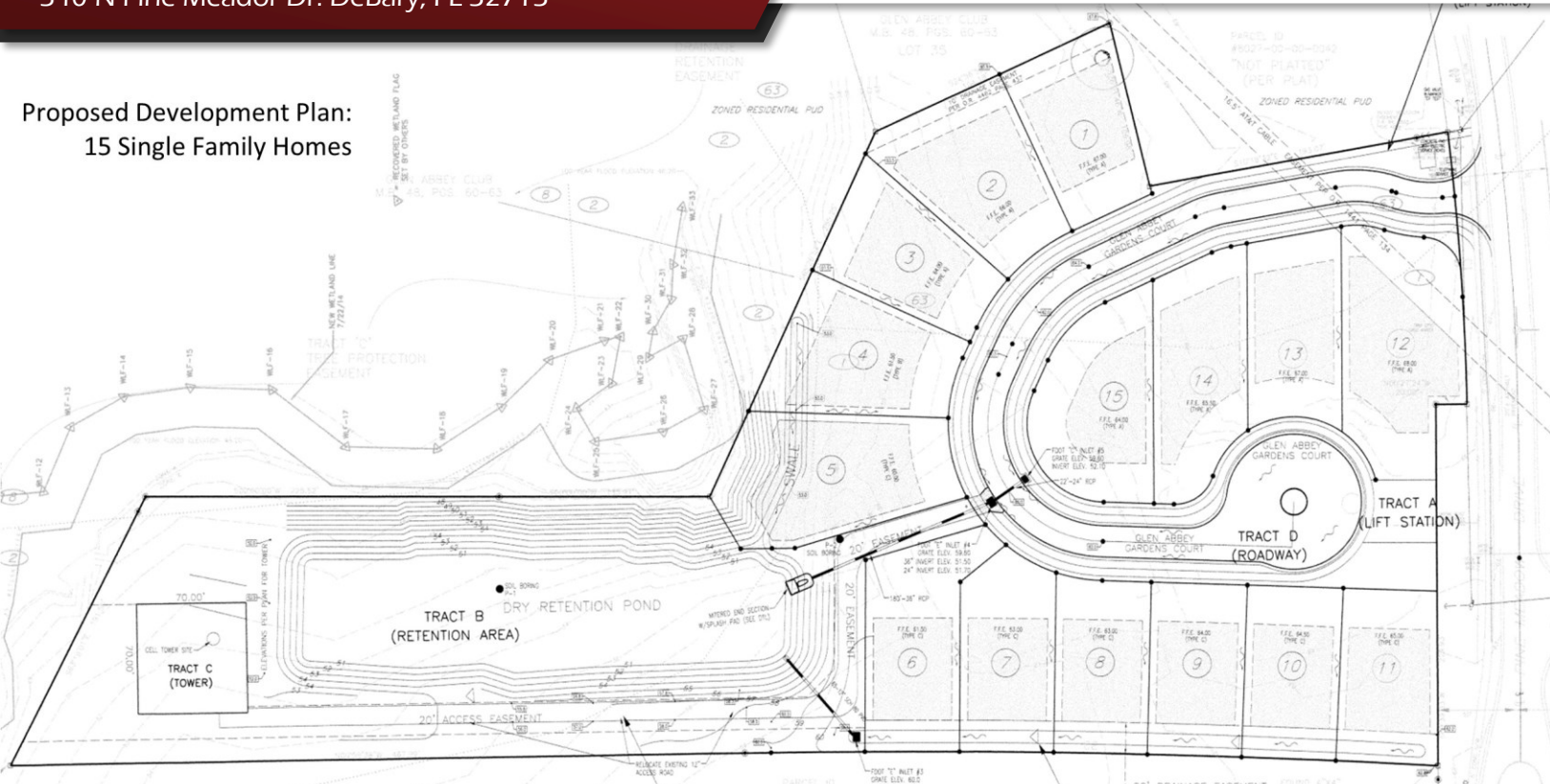
Palkiper has made every effort to obtain the information regarding this property from sources deemed reliable. However, we cannot warrant the complete accuracy thereof subject to errors, omissions, change of price, rental, or other conditions, prior sale, lease or financing or withdrawal without notice.
Licensed Real Estate Broker.

02/10/22

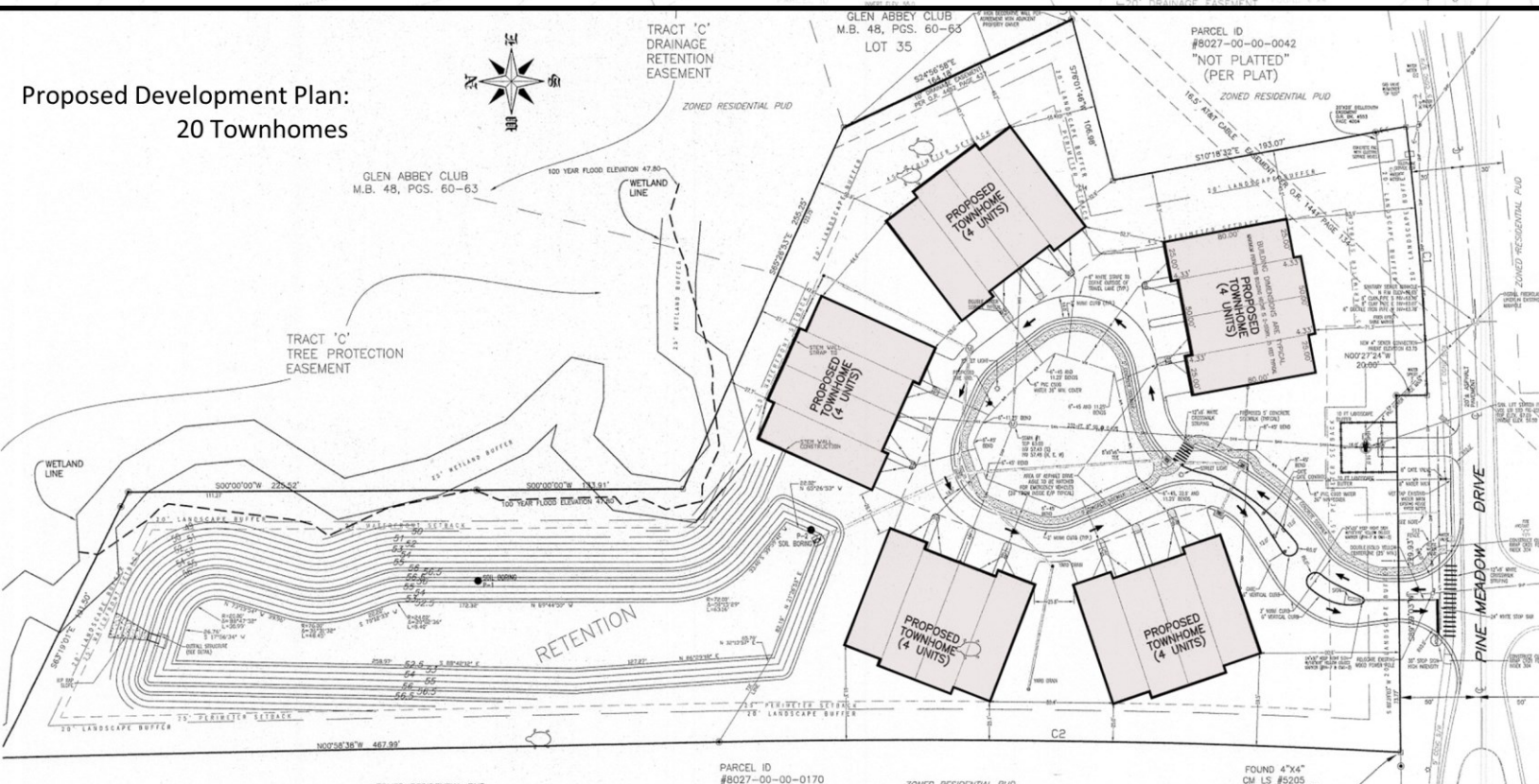
Glen Abbey Residential Development

340 N Pine Meador Dr. DeBary, FL 32713

Proposed Development Plan: 15 Single Family Homes



Proposed Development Plan: 20 Townhomes



CONTACT FOR MORE INFORMATION

Marie Shorey, CCIM

(407) 383-8142

marie@palkiper.com